



CENTRAL OREGON
COMMUNITY COLLEGE
Board of Directors' Meeting – AGENDA
Wednesday, December 12, 2012 – 6:00 PM
Christiansen Board Room, Boyle Education Center

TIME**	ITEM	ENC.*	ACTION	PRESENTER
6:00 pm	I. Call to Order			Reeder
6:01 pm	II. Introduction of Guests			
6:05 pm	III. Agenda Changes			
6:07 pm	IV. Public Hearing and Testimony A.			
6:10 pm	V. Consent Agenda***			
	A. Minutes			
	1. Regular – November 14, 2012	5.a1	X	Smith
	B. Personnel			
	1. New Hire Report (Nov. 2012)	5.b1	X	Buckles ^A
	2.			
6:15 pm	VI. Information Items			
	A. Financial Statements	6.a		Bloyer ^A
	B. Construction Projects - Update	6.b		McCoy ^A
	C. Governor's Budget Proposal	6.c*		Middleton ^P
	D. College Now	6.d		Newby ^A
	E. Non-Credit Enrollment	6.e*		Newby/Metcalf ^P
6:45 pm	VII. Old Business			
	A. Vision Statement	7.a*	X	Middleton ^P
	B. Facility Naming	7.b*	X	Middleton ^P
7:05 pm	VIII. New Business A.			
7:10 pm	IX. Board of Directors' Operations A. Board Member Activities			
7:25 pm	X. President's Report A. Updates			
	1. COCC Leadership Staffing			Middleton
	XI. Dates			
	1. Wednesday, January 9, 2013 – Board of Directors Meeting (Board Room/Boyle Education Center Bldg.)			
7:45 pm	XII. Adjourn			

* Material to be distributed at the meeting (as necessary). ** Times listed on the agenda are approximate to assist the Chair of the Board. *** Confirmation of Consent Agenda items submitted by the President. Any item may be moved from the Consent Agenda to Old/New Business by a Board Member asking the Chair to consider the item separately. ^P = indicates a presentation will be provided. ^A = indicates the presenter is Available for background information if requested.

Exhibit: 5.b1
December 12, 2012
Approve: ___ Yes ___ No
Motion: _____

**Central Oregon Community College
Board of Directors**

NEW HIRE REPORT – November 2012

<u>Name</u>	<u>Date Hired</u>	<u>Location</u>	<u>Job Title</u>
Classified Full-Time			
Landin, Kim	11/27/2012	Bend	Office Spec, Cont Ed
Premo, Ashlee	11/13/2012	Bend	Research Spec, IE

Central Oregon Community College
Monthly Budget Status
Highlights of October 2012 Financial Statements

Cash and Investments

The Colleges' operating cash balances currently total \$28.4 million. The October average yield for the Local Government Investment Pool remains unchanged at .60 percent.

The bond proceeds held in cash and investments total \$8.8 million as of the end of October.

General Fund Revenues

The College received the second State Aid payment of \$1.3 million. Tuition and fee revenues represent fall term enrollment as of the end of October, a \$42,000 increase over the prior month. All transfers have been posted for the year including \$300,000 from the PERS reserve account.

General Fund Expenses

The expenses include the approved inter-fund transfers for the fiscal year at this point in time. Under the new policy regarding Veteran and Dependent waivers, the College has awarded \$9,816 in tuition waivers.

Budget Compliance

Financial Aid expense in the general fund is over budget due to the new policy regarding Veterans & Dependents waivers. The college will present a budget transfer at the January 2013 board meeting. All other budget categories are in compliance.

Central Oregon Community College
Cash and Investments Report
As of October 31, 2012

College Portfolio	<u>Operating Funds</u>	<u>Bond Funds</u>	<u>Trust/Other Funds</u>
Cash in State Investment Pool			
Pool account 4089	\$26,564,583.94		
Pool account 5482			\$491,769.73
Pool account 3624			\$377,969.47
Pool account 3816		\$6,443,080.35	
Pool account 3707		\$87,125.64	
Pool account 3844		\$67,782.75	
October Average Yield .60%			
Cash in USNB	\$1,826,721.45		
Cash in USNB - Bond Funds		\$0.00	
Cash on Hand	\$3,900.00		
Total Cash	<u>\$28,395,205.39</u>	<u>\$6,597,988.74</u>	<u>\$869,739.20</u>
 Investments			
Commercial Paper			
Yield .508%, due 1-15-13		\$2,193,338.89	
Total Investments	<u>\$0.00</u>	<u>\$2,193,338.89</u>	<u>\$0.00</u>
Total Cash and Investments	<u><u>\$28,395,205.39</u></u>	<u><u>\$8,791,327.63</u></u>	<u><u>\$869,739.20</u></u>

Central Oregon Community College
Monthly Budget Status
October 2012

Exhibit 6a
12-Dec-12

<u>General Fund</u>	<u>Adopted Budget</u>	<u>Year to Date Activity</u>	<u>Variance Favorable (Unfavorable)</u>	<u>Percent of Budget Current Year</u>	<u>Percent of Budget Prior Year</u>
Revenues					
District Property Taxes:					
Current Taxes	\$ 11,246,000	\$ -	\$ (11,246,000)	0.00%	0.00%
Prior Taxes	873,000	448,066	(424,934)	51.32%	37.84%
Tuition and fees	19,736,000	6,736,442	(12,999,558)	34.13%	33.53%
State Aid	5,001,000	2,520,168	(2,480,832)	50.39%	46.38%
Grants & Contracts	86,000	1,000		1.16%	0.00%
Interest & Misc. Income	49,000	91,139	42,139	186.00%	112.33%
Transfer-In	1,720,000	1,720,000	-	100.00%	100.00%
Total Revenues	\$ 38,711,000	\$ 11,516,815	\$ (27,109,185)		
Expenses by Function					
Instruction	\$ 17,455,663	\$ 3,799,006	\$ 13,656,657	21.76%	20.48%
Academic Support	3,007,172	827,088	2,180,084	27.50%	24.93%
Student Services	4,232,422	1,241,613	2,990,809	29.34%	27.66%
College Support	4,600,019	1,498,330	3,101,689	32.57%	35.26%
Plant Operations and Maintenance	4,098,218	1,082,950	3,015,268	26.42%	28.25%
Information Technology	3,187,700	1,179,791	2,007,909	37.01%	37.46%
Financial Aid	12,897	13,834	(937)	107.27%	7.09%
Contingency	800,000	-	800,000	0.00%	0.00%
Transfers Out	3,055,683	3,055,683	-	100.00%	91.33%
Total Expenses	\$ 40,449,774	\$ 12,698,295	\$ 27,751,479		
Revenues Over/(Under) Expenses	\$ (1,738,774)	\$ (1,181,480)	\$ 642,294		

Central Oregon Community College
Monthly Budget Status
October 2012

Exhibit 6a
12-Dec-12

<u>Other funds:</u>	<u>Adopted Budget</u>	<u>Year to Date Activity</u>	<u>Variance Favorable (Unfavorable)</u>	<u>Percent of Budget Current Year</u>	<u>Percent of Budget Prior Year</u>
Debt Service Fund					
Revenues	\$ 4,289,429	\$ 1,088,780	\$ (3,200,649)	25.38%	25.10%
Expenses	4,289,358	970,442	3,318,916	22.62%	22.97%
Revenues Over/(Under) Expenses	\$ 71	\$ 118,338	\$ 118,267		
Grants and Contracts Fund					
Revenues	\$ 1,983,640	\$ 283,331	\$ (1,700,309)	14.28%	5.65%
Expenses	2,093,600	406,701	1,686,899	19.43%	6.00%
Revenues Over/(Under) Expenses	\$ (109,960)	\$ (123,370)	\$ (13,410)		
Capital Projects Fund					
Revenues	\$ 10,508,677	\$ 2,807,446	\$ (7,701,231)	26.72%	26.50%
Expenses	27,633,820	3,055,064	24,578,756	11.06%	27.53%
Revenues Over/(Under) Expenses	\$ (17,125,143)	\$ (247,618)	\$ 16,877,525		
Enterprise Fund					
Revenues	\$ 7,204,787	\$ 1,772,078	\$ (5,432,709)	24.60%	27.15%
Expenses	7,986,819	2,289,332	5,697,487	28.66%	29.49%
Revenues Over/(Under) Expenses	\$ (782,032)	\$ (517,254)	\$ 264,778		
Auxiliary Fund					
Revenues	\$ 9,064,223	\$ 5,255,518	\$ (3,808,705)	57.98%	57.17%
Expenses	9,745,764	4,773,859	4,971,905	48.98%	40.21%
Revenues Over/(Under) Expenses	\$ (681,541)	\$ 481,659	\$ 1,163,200		
Reserve Fund					
Revenues	\$ 12,739	\$ -	\$ (12,739)	0.00%	0.00%
Expenses	480,000	341,384	138,616	71.12%	68.37%
Revenues Over/(Under) Expenses	\$ (467,261)	\$ (341,384)	\$ 125,877		
Financial Aid Fund					
Revenues	\$ 22,561,313	\$ 7,314,793	\$ (15,246,520)	32.42%	34.93%
Expenses	22,605,568	7,626,555	14,979,013	33.74%	37.99%
Revenues Over/(Under) Expenses	\$ (44,255)	\$ (311,762)	\$ (267,507)		
Internal Service Fund					
Revenues	\$ 398,715	\$ 106,369	\$ (292,346)	26.68%	11.14%
Expenses	573,990	266,810	307,180	46.48%	13.98%
Revenues Over/(Under) Expenses	\$ (175,275)	\$ (160,441)	\$ 14,834		
Trust and Agency Fund					
Revenues	\$ 1,886	\$ 721	\$ (1,165)	38.23%	31.84%
Expenses	7,500	2,293	5,207	30.57%	30.56%
Revenues Over/(Under) Expenses	\$ (5,614)	\$ (1,572)	\$ 4,042		

Grandview Renovation Project November 2012 Status Report

Scope

Renovate Grandview to consolidate the Math Department to one location. Provide SMART math lab space in proximity to Math Department offices.

Budget Status

Total project budget is not to exceed \$1,300,000. A detailed budget breakdown will be available once the final programming concepts have been finalized.

Change Order Activity

None.

Schedule Status

Design	July 2012 to December 2012
Bid/Award	January & February 2013
Construction	March 2013 to July 2013
Move in	August to September 2013

Activity in November

Clarified minor revisions to the floor plan and the delivery method (fixed PC's or laptop charging cart) for the SMART lab.

Existing classrooms to remain and be utilized as SMART labs on an as needed basis using laptops that will always be ready for use by storing in charging carts.

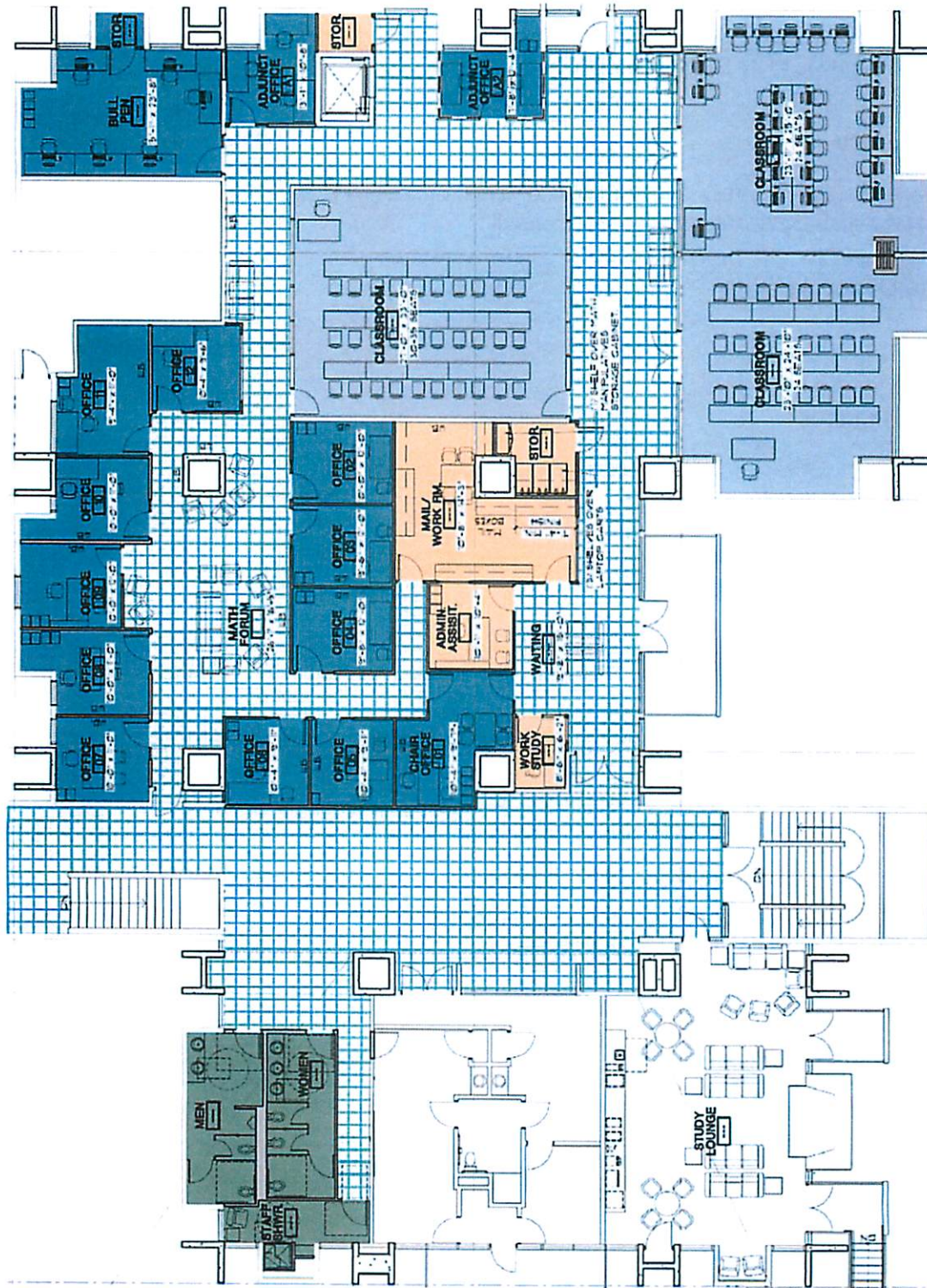
Conducted design meeting with Math Faculty for specific input regarding programmatic elements.

Activity planned for December

Finalize design issues and work towards completion of Construction Documents and Permit Drawings. Solicit for Special Inspection and Testing agency.

Grandview Renovation Project November 2012 Status Report

SCHEMATIC DESIGN PLAN



Grandview Renovation Project November 2012 Status Report

Project Participants

COCC Administration

Matt McCoy	Vice President for Administration	mmccoy@cocc.edu
Gene Zinkgraf	Director of Construction	gzinkgraf@cocc.edu
Jennifer Newby	Instructional Dean - Math	jnewby@cocc.edu
Michael Fisher	Instructional Dean – Business	mfisher@cocc.edu
Doug Nelson	Math Department Chair	dnelson@cocc.edu
Jim Ellis	Business Department Chair	jellis@cocc.edu
Rick Hayes	Construction Project Manager	rhayes@cocc.edu
Darren McCrea	Construction IT Manager	dmccrea@cocc.edu

Design Consultant

Steele Associates Architects
760 NW York Drive, Suite 200
Bend, OR 97701
Jeff Wellman, Project Architect
Steve Olson, Project Architect
541-382-9867
jwellman@steele-arch.com
solson@steel-arch.com

Testing Agency

TBD

General Contractor

TBD

Redmond Building 1 Add. – November 2012 Update

Scope

The project is a 2300sf addition to Building 1 at the Redmond Campus. The added square footage will house a new 52 seat classroom and 24 seat Science Lab. Remodeled space within Building 1 will accommodate a 32 seat computer lab that will support both the new SMART Mathematics curriculum as well as CIS.

Budget Status

The overall budget for the building is \$1,622,014. This is a Bond funded project with additional funds provided by the state. Construction bids for the project were over the assigned budget, the low bid was awarded at \$934,000. The team will look for ways to bring the project back toward the budget via deductive changes during construction and changes to the FF&E plan.

Change Order Activity

Change activity this month has been minor. All approved changes this month total \$3,200. See change order log for additional information.

Schedule Status

The project is scheduled to open for classes Spring Term of 2013. Phase 1 will open for Winter Quarter 2013.

Recent Activity

Phase 1 (Remodel) progressed on schedule and all that is left is flooring and furniture.

On the addition portion of the project, foundations have been placed, underground utilities completed, and slab on grade finished. Masonry started the last week of the month and will continue into next month.

IT has been coordinating their AV installations with KNCC and have been able to get overhead cabling installed early.

Activity Next Month

Phase 1 construction will complete and we will furnish and move into the spaces. IT will install the computer lab and AV in 128 and 122.

The addition will continue with structure and may get dried in next month. Sitework will continue as weather permits.

Redmond Building 1 Add. – November 2012 Update

Project Participants

COCC Stakeholder Group

Matt McCoy	-	VP for Administration
Shirley Metcalf	-	Dean of Continuing Education
Gene Zinkgraf	-	Director of Construction
Rich Brecke	-	Project Manager
Darren McCrea	-	Construction IT Specialist
Julie Mosier	-	Purchasing Coordinator

Design Team

Jeff Wellman	-	Steele Associates Architects
Scott Steele	-	Steele Associates Architects
Emily Freed	-	Steele Associates Architects
Steve Olson	-	Steele Associates Architects

Contractor Group

Jason Terry	-	Kirby Nagelhout Construction
Pete Showers	-	Kirby Nagelhout Construction
Mark Miller	-	Kirby Nagelhout Construction
Jeff Deswert	-	Kirby Nagelhout Construction

Redmond Building 1 Add. – November 2012 Update



Room 122 General Science Lab



Room 128 Computer Lab

Redmond Building 1 Add. – November 2012 Update



Placing Slab on Grade



Masonry Begins

Residence Hall November 2012 Status Report

Scope

Residence Hall project is to provide approximately 330 beds for student housing. A small amount of support and common space will be provided within the project. The building is anticipated to be Earth Advantage Multi-Family Gold or Platinum level certified. Parking and access road/utilities are anticipated to be on the downhill side of the track. It is also expected that summer programs will utilize the facilities.

Budget Status

Project Budget included. There are financial parameters that must be met for the project to proceed past the Schematic Design phase.

Change Order Activity

None.

Schedule Status

Design progress was suspended nearing the end of Schematic Design in order to verify project financial parameters and have a thorough review of the project benefits and risks. The project now has a completion and move-in of summer 2015.

Activity in November

Board of Directors approval to proceed with design process per original requirements. The Schematic Design and estimate will be presented to the Board when completed.

Board of Directors approval to proceed with the CM/GC process. The Findings establishing the CM/GC process will be proposed as a resolution for Board adoption at an upcoming meeting after the CM/GC Findings public meeting has been completed.

CM/GC Findings drafted.

Activity planned for December

Advertisement for CM/GC public hearing.

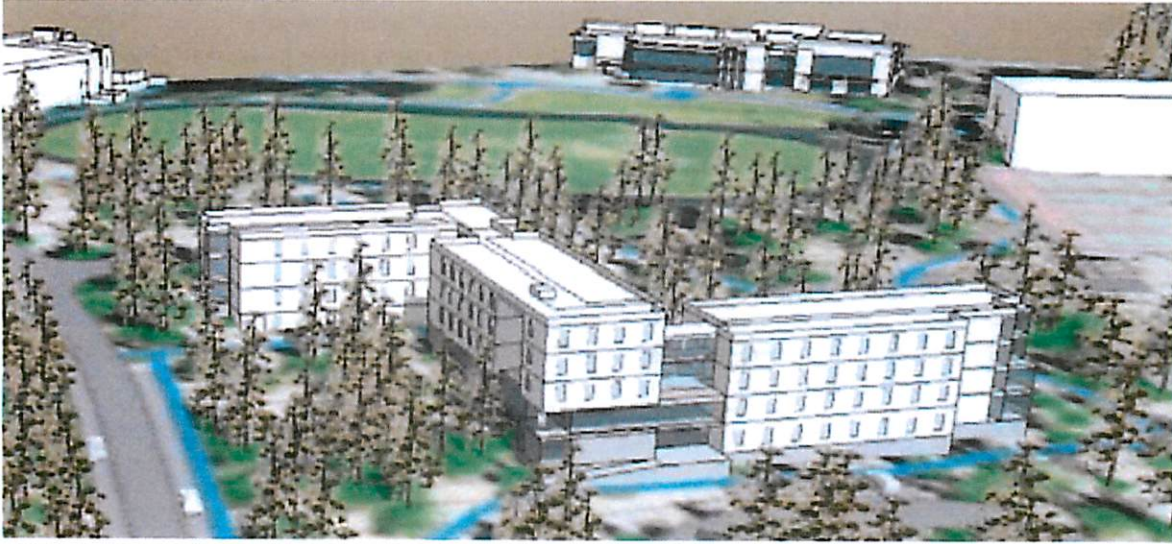
Finalize draft Findings for public distribution as requested.

Conduct public hearing regarding CM/GC findings on December 18th at 5:30 PM in CCB 116.

Begin to draft RFP for CM/GC solicitation.

Initiate discussions with Mahlum regarding CM/GC process and resumption of design services.

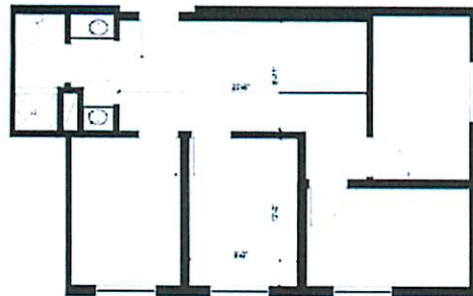
Residence Hall November 2012 Status Report



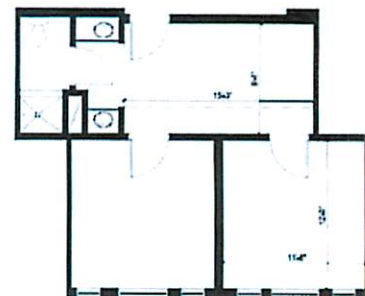
Conceptual preliminary building perspective.



RA SINGLE	
SINGLE BEDROOM	203 SF
BATHROOM	58 SF
TOTAL	263 SF NET
	315 SF GROSS



QUAD SINGLES	
SHARED ROOM	197 SF
SINGLE BEDROOM	105 SF
SINGLE BEDROOM	105 SF
SINGLE BEDROOM	105 SF
SINGLE BEDROOM	108 SF
BATHROOM	79 SF
TOTAL	708 SF NET
	852 SF GROSS



QUAD DOUBLES	
SHARED ROOM	137 SF
DOUBLE BEDROOM	138 SF
DOUBLE BEDROOM	138 SF
BATHROOM	79 SF
TOTAL	492 SF NET
	578 SF GROSS

Residence Hall November 2012 Status Report

Project Participants

COCC Steering Committee

Matt McCoy	Vice President of Administration
Kevin Kimball	Chief Financial Officer
Alicia Moore	Dean of Students
Gordon Price	Director of Student Life
Joe Viola	Director of Campus Services
Gene Zinkgraf	Director of Construction
Rick Hayes	Project Manager

Design Consultant

Mahlum Architecture
1231 NW Hoyt, Suite 102
Portland, Oregon 97209
541-224-4032

Mark Cork, Principal Anne Schopf, Design Partner Kurt Haapala, Senior Project Manager
Pinnacle (Associate Architects) Peter Baer, Principal and Mark Rossi, Project Manager

Civil Survey Consultant

KPFF Consulting Engineers
111 SW Fifth Avenue, Suite 2500
Portland, OR 97204-3628
503-227-3251 Troy Tetsuka, Survey Manager

Geotechnical Engineer

FEI Testing & Inspection, Inc.
62979 NE Plateau Drive, #3
Bend, OR 97701
Bill Smith, Geotechnical Engineer, 541-382-4844 bsmith@feitesting.com

Testing Agency TBD

Technology Education Center – November 2012 Update

Scope

A 37,000 square foot building to be built on the corner of Veterans Way and Salmon Dr. in Redmond. The building will house technology centered programs which will initially be the Center for Entrepreneurial Excellence and Development, Non-Destructive Testing and Inspection, Digital Arts and Media, and Flexible Technology.

Budget Status

The budget for the building will be \$13.1 Million. This includes a \$5.7 Million match from the State of Oregon. Currently the projected project cost exceeds the budget.

Change Order Activity

No additional Change Order Activity has occurred since the March 2012 Update.

Schedule Status

Due to higher than expected construction bids and subsequent rejection of all bids, the project will be delayed by 1 year. The new opening date is Fall Term of 2014.

Recent Activity

The list of VE items has been finalized and the appropriate options taken. The VE items exercised will reduce the cost of construction by \$2.45 Million. This results in a projected overall budget overage of \$540,000. The new overall project budget will be \$13,107,000.

Design Documents are being revised to reflect the cost saving measures identified in the VE process.

Activity Next Month

Revisions to the design documents will continue.

Technology Education Center – November 2012 Update

Project Participants

COCC Stakeholder Group

Karin Hilgersom	-	VP of Instruction
Matt McCoy	-	VP for Administration
Shirley Metcalf	-	Dean of Continuing Education
Chris Redgrave	-	Director of MATC
Gene Zinkgraf	-	Director of Construction
Rich Brecke	-	Project Manager
Darren McCrea/Jeff Floyd	-	Construction IT Specialist
Julie Mosier	-	Purchasing Coordinator

Design Team

Don Stevens	-	BBT Architects
Kevin Shaver	-	BBT Architects
Doug Schwartz	-	Froelich Consulting Engineers (Structural)
ML Vidas	-	Vidas Architecture (Earth Advantage Consulting)
Grant Hardgrave	-	Hickman Williams and Associates (Civil)
Marcia Vallier	-	Vallier Design Associates (Landscape)
John Van Bladeren	-	MFIA Inc. (MEP Design)

Contractor Group

Not Identified Yet	-	TBD
--------------------	---	-----

Technology Status Report – November 2012

Current Projects

The remodel and addition of new classroom and lab spaces in **Redmond Building One** is under way. The first phase of this project consists of remodeling Conference Room 130 and Classroom 128 to create a 32-seat Computer Lab and, at the same time, remodeling Classroom 120 and Skills Center 122 to create a new Science Lab. In addition to these two new classroom spaces, we are upgrading and expanding the size of the existing Data Closet (IDF) to support the new spaces and additional computers. The second phase of the project will include the addition of a new Chemistry Lab as well as a general purpose Classroom.

The remodel design of the second floor of **Grandview** is being finalized. Plans currently include additional computer labs, classrooms and faculty office space.

The **Redmond Technology Center** is currently in redesign. Anticipated bid for construction is February of 2013 and June or July for the Audio-Visual work.

Schedule Status

Redmond Building One is currently on schedule and we anticipate having the remodel phase completed early and in time for Winter Quarter. The **Grandview** remodel and the **Redmond Technology Center** are both still in design with no firm schedule for either project.

Activity in November

REDMOND BUILDING ONE REMODEL

Phase One of the **Redmond Building One Remodel** is on schedule. We have been working with contractors and monitoring infrastructure and installation work onsite. The low-voltage sub-contractor has installed new data wiring to both of the remodeled classrooms and our IT department has already begun the AV wiring to support the Audio-Visual and Assisted Listening equipment and is coordinating placement of speakers and projectors in ceiling grid.

Technology Status Report – November 2012

Photos – Redmond Building One



Data, Lights & Paint – Classroom 122, Redmond Building One



Data, Lights & Paint – Classroom 128, Redmond Building One

Technology Status Report – November 2012

Photos – Redmond Building One



Data Closet Expansion – MDF, Redmond Building One

Upcoming Activities – December

Most construction for Phase One of the **Redmond Building One Remodel** should be complete by the end of November, allowing the furniture contractor to begin work the first week of December. The COCC IT Department will then install PC's and Printers for the new computer lab as well as new audio-visual equipment in both Science Lab 122 and Computer Lab 128. In addition, we will also be installing new network equipment in the expanded MDF to support these additional PC's as well as the new Chemistry Lab and Classroom. Phase Two will be the addition of the previously mentioned Chemistry Lab and a General Classroom. Construction for this phase should be complete in March. Review of design and infrastructure for the **Grandview** remodel and the **Redmond Technology Center** will continue during this time as well.

Technology Status Report – November 2012

COCC Director of Construction - Gene Zinkgraf, 541-330-7796, email: gzinkgraf@cocc.edu

COCC Construction PM - Rich Brecke, 541-330-4375, email: rbrecke@cocc.edu

COCC Construction PM - Rick Hayes, 541-330-4391, email: rhayes@cocc.edu

COCC IT Project Manager - Darren McCrea, 541-383-7741, email: dmccrea@cocc.edu

General Contractor, Redmond Building One

Kirby Nagelhout Construction Company
20635 NE Brinson Blvd
Bend, OR 97701
541-389-7119

College Now Enrollment by High School
2008-09 through 2011-12

High School	Total Enrollment (duplicated headcount)			
	2008-09	2009-10	2010-11	2011-12
Bend	222	169	135	120
Crook County	69	25	36	74
Culver	21	25	25	15
Edwin Brown	9	N/A	N/A	N/A
Gilchrist	11	12	10	21
Grants Pass	N/A	N/A	9	7
Knappa	N/A	4	N/A	N/A
La Grande	N/A	N/A	1	5
La Pine	4	20	46	59
Madras	51	19	7	32
Mountain View	650	770	788	900
North Lake	14	13	N/A	N/A
Redmond	475	430	330	352
Redmond Proficiency Academy	N/A	N/A	25	103
Sherman	N/A	27	3	8
Sisters	99	128	113	77
Summit	182	105	136	196
Trinity Lutheran	N/A	N/A	N/A	5
TOTAL	1,807	1,747	1,664	1,974

**College Now Courses by High School
Enrollment by Course
2008-09 through 2012-13**

Bend High School

Course	2008-09	2009-10	2010-11	2011-12
AH 100 Intro Health Occupations	5	7	2	19
AH 111 Medical Terminology I	2			
AH 112 Medical Terminology II	1			
BA 101 Intro to Business	42	47	35	
BA 111 Applied Accounting I	8			
BA 220 QuickBooks	1			
BI 121 Anatomy and Function I	23	22	20	20
BI 122 Anatomy and Function II	23	21	19	20
CCI 141 Baking I			2	
CCI 144 Intro to Baking Science				1
CCI 145 Basic Baking Principles				1
CIS 125 Intro to Dreamweaver	77			
ED 150 Enviro & Curriculum in ECE	3	5		
MTH 113 Topics in Precalculus	37			
MTH 251 Calculus I		34	13	
MTH 252 Calculus II		33	9	
WR 121 English Composition			21	32
WR 122 English Composition			14	27
TOTAL	222	169	135	120

Crook County High School

Course	2008-09	2009-10	2010-11	2011-12
AH 100 Intro Health Occupations	3	10	9	
AH 111 Medical Terminology I	5			
AH 112 Medical Terminology II	1			
AV 101 Introduction to Aviation	1			
AV 110 Private Pilot	1			
BA 101 Intro to Business	18			
BA 111 Applied Accounting I	15			
CCI 071 Basic Sanitation	2		3	
FOR 110 Wildland Fire Science I				29
FOR 127 Plants of the Pacific Northwest	20	15	4	26
FOR 195 Wilderness Concepts				19
MFG 103 Welding Technology I	3			
SPAN 101, First Year Spanish I			20	
TOTAL	69	25	36	74

Culver High School

Course	2008-09	2009-10	2010-11	2011-12
AH 100 Intro Health Occupations	14			
BA 101 Intro to Business		11	8	
BA 218 Personal Finance		13		
CIS 125 Intro to Dreamweaver	5	1		
CIS 195 Web Development I	2			
WR 121 English Composition			10	10
WR 122 English Composition			7	5

Edwin Brown High School

Course	2008-09	2009-10	2010-11	2011-12
BA 080 Working Internship	4	Closed		
CCI 081 Food Service Nutrition	5	Closed		

Gilchrist High School

Course	2008-09	2009-10	2010-11	2011-12
AUT 107 Mechanical Systems I			5	
CIS 070 Intro to Computers: Windows	6	5		
MFG 101 Blueprint Reading			4	
MFG 115 Design Processes I			1	21
MFG 199 Selected Topics: Manufacturing	5	7		

Grants Pass High School

Course	2008-09	2009-10	2010-11	2011-12
OL 253 Wilderness Advanced First Aid			9	7

Knappa High School

Course	2008-09	2009-10	2010-11	2011-12
FOR 230A Map, Compass & GPS		4		

La Grande High School

Course	2008-09	2009-10	2010-11	2011-12
CCI 141 Baking I			1	
CCI 144 Intro to Baking Science				5

La Pine High School

Course	2008-09	2009-10	2010-11	2011-12
AH 100 Intro to Health Occupations		11		
BA 080 Working Internship		8		
BA 101 Intro to Business		1		
CIS 070 Intro to Computers: Windows	3			
FOR 110 Wildland Fire Science I	1			2
WR 121 English Composition			26	35
WR 122 English Composition			20	22

Madras High School

Course	2008-09	2009-10	2010-11	2011-12
AH 100 Intro to Health Occupations			7	
BA 111 Applied Accounting I	3	1		
BA 218 Personal Finance	15	6		
BI 101 General Biology I				12
BI 102 General Biology II				10
BI 103 General Biology III				10
CIS 070 Intro to Computers: Windows	32	11		
CIS 135 Database Theory/SQL	1	1		

Mountain View High School High School

Course	2008-09	2009-10	2010-11	2011-12
AH 100 Into Health Occupations	22	28	25	20
AH 111 Medical Terminology I	13	21		
AH 112 Medical Terminology II	5			
AUT 107 Mechanical Systems I	2			2
BA 111 Applied Accounting I	7	7	24	13
BI 121 Anatomy and Function I	59	44	77	76
BI 122 Anatomy and Function II	54	38	66	69
CCI 071 Basic Sanitation			1	
CCI 121 Hot Food Production			1	1
CCI 141 Baking I			1	
CCI 144 Intro to Baking Science				1
CCI 145 Basic Baking Principles				1
CCI 151 Garde Manger I			1	1
CCI 161 Dining Room Operations			1	1
CIS 125 Introduction to Dreamweaver	1			
CJ 100 Survey Criminal Justice System	16	17	21	26
ED 140 Introduction to ECE	12	18		
ED 150 Enviro & Curric in ECE	9	17		
ED 173 Movement, Music & Arts in ECE	12	1		
ENG 104 Intro to Literature: Fiction				14
ENG 253W Survey American Lit I	38	55	42	47
ENG 254W Survey American Lit II	37	45	33	35
MTH 111 College Algebra	97	99	96	137

MTH 112 Trigonometry	84	86	89	119
MTH 113 Topics in Precalculus		84	78	113
MTH 251 Calculus I	55	64	68	54
MTH 252 Calculus II	17	55	66	49
WR 121 English Composition	41	48	47	62
WR 122 English Composition	37	36	41	55

North Lake High School

Course	2008-09	2009-10	2010-11	2011-12
MTH 111 College Algebra	7	8		
MTH 112 Trigonometry	7	5		

Redmond High School

Course	2008-09	2009-10	2010-11	2011-12
AH 100 Intro Health Occupations	31	3		
AUT 107 Mechanical Systems I	14	11	9	1
AUT 110 Small Gas Engines	20	8	25	19
BA 080 Working Internship	7	21	11	9
BA 101 Intro to Business	16	7		
BA 111 Applied Accounting I		8	7	21
BA 178 Customer Service		2		
BA 218 Personal Finance	23	39		
BI 101 General Biology I	20	35	19	
BI 102 General Biology II	15	17	12	
CCI 141 Baking I	1			
ED 140 Introduction to ECE	2			1
ED 150 Enviro & Curric in ECE	4		2	6
ED 173 Movement, Music & Arts ECE				10
ENG 253W Survey American Lit I	61	37	42	54
ENG 254W Survey American Lit II	51	37	38	47
GS 108 Oceanography	37	36	20	19
MFG 101 Blueprint Reading				2
MFG 115 Design Processes I			9	2
MFG 199 Selected Topics: Manufacturing	4	3		
MTH 111 College Algebra	80	76	53	66
MTH 112 Trigonometry	61	49	47	53
MTH 251 Calculus I	8	34	13	23
MTH 252 Calculus II	8	14	11	19
NUR 095 Nursing Assistant	11	7	7	
NUR 096 Level 2 Nursing Assistant	1	1	5	

Redmond Proficiency Academy

Course	2008-09	2009-10	2010-11	2011-12
AH 100 Intro Health Occupations				7
BA 080 Working Internship				2
BI 101 General Biology I				20

BI 102 General Biology II				16
BI 103 General Biology III				13
BI 121 Anatomy & Function I			15	17
BI 122 Anatomy & Function II			10	14
FOR 127 Plants of Pacific Northwest				14

Sherman High School

Course	2008-09	2009-10	2010-11	2011-12
CCI 081 Food Service Nutrition		14	3	
CCI 110 Culinary Nutrition				8
CCI 141 Baking I		13		

Sisters High School

Course	2008-09	2009-10	2010-11	2011-12
AH 100 Intro Health Occupations	18	24	12	5
CCI 081 Food Service Nutrition	7	8		
CCI 144 Intro to Baking Science				2
CCI 145 Basic Baking Principles				2
EMT 170 Emergency Response Comm			21	
EMT 175 Intro to Emergency Services		18	20	5
MTH 111 College Algebra	41	46	35	32
MTH 112 Trigonometry	33	32	25	31

Summit High School

Course	2008-09	2009-10	2010-11	2011-12
AH 111 Medical Terminology I	7			
AH 112 Medical Terminology II	2			
BA 111 Applied Accounting I		10		
BI 121 Anatomy and Function I	22	25	20	43
CJ 100 Survey Criminal Justice System	20	52	49	36
ED 140 Introduction to ECE	7	7	16	
ED 150 Enviro & Curric in ECE	7	7		
ED 173 Movement, Music & Arts ECE		4	16	
MFG 115 Design Processes I				14
MTH 111 College Algebra	57			
MTH 112 Trigonometry	42			
MTH 251 Calculus I	12			14
MTH 252 Calculus II	6			11
WR 121 English Composition			18	41
WR 122 English Composition			17	37

Trinity Lutheran High School

Course	2008-09	2009-10	2010-11	2011-12
BI 121 Anatomy and Function I				5